



the Horse & the Rider

Sculptures by Shona Nunan

For me, the horse and rider represent the journey of one's life. There are many plateaus along the way of life and I guess, that as I experience them, I create a new horse and rider. 'The Quiet' is a piece that comes from a time in life of peace, of meditation of being in tune with one's inner being. The rider and horse are at one, the horse is strong and sturdy and is trusted by the rider, the rider is at one with the horse and at one with life.

The Quiet
2005
bronze edition 5 of 8
127 x 115 x 51 cm



Nunan created 'Joy' while she was working on a major commission for three acrobats. Inspired by traditional Chinese clothing, she sculpted the acrobats in a more geometric format to avoid the anatomical concentration of figure and to focus more on the solidity of the supporting figures in the squared off clothes and the exuberance and energy of movement in the balancing acrobat. The rider in Joy has a direct correlation to these acrobats, creating a star form in his Chinese inspired costume, a moment of joy and abandon, arms and legs flung wide, with absolute trust in the safety and strength of the solid horse below. This sculpture is truly a celebration of life, of the feeling of certainty and safety one sometimes knows and the complete joy of letting go.

The first edition is in the collection of the Hamilton Regional Gallery Museum, Australia.

Joy
2009
bronze
edition of 8
57 x 53 x 40 cm



The Quiet – maquette
2002-2003
maquette
35.5 x 15 x 53cm
bronze ed 3 of 8



Young Stallion
2019
bronze edition I of 8
47 x 32 x 10 cm



Foal. Beautiful, the innocence of youth. I have been profoundly influenced by Etruscan sculptures since living in Italy and somehow I think this foal is reminiscent of those sculptures. It is elongated without any classical proportion.

Foal
2019
bronze edition 1 of 8
101,5 x 53 x 26 cm



Dream
bronze unique
50 x 38 x 24 cm
2000



Nisan comes from my series on horses and riders, for me, the journey of life. Nisan is inspired from a beautiful Arabian horse in Italy that I loved drawing. Much license has been taken with this version of him, but what I wanted to convey was that part on the journey of life when the spirit yearns and reaches for the dream.

Nisan
2010-2011
Bronze edition I of 8
76 x 43 x 21cm



The Horse and Rider is a significant evolving theme in Nunan's work. With early influences from old Swedish horse carvings, Chinese ceramics and the Italian artist Marino Marini, she has created her horse and riders to represent the journey through life. Each plateau in her life has brought forth a new Horse and Rider. Nunan symbolically regards the Horse and Rider as a symbiotic union of spirit and ego. Her earlier horses were a lot finer and lighter than the heavier riders, more and more the horse is stronger and more than equal in the partnership.

Reflecting the passage through life, 'Arrival' emerged after a time of great endurance and with this sculpture Nunan often refers to the sense that she had climbed to the top of a mountain. The feeling of arrival gave a great sense of calm and tranquility with an overview of the past and the view ahead splendid, the possibilities endless.

Arrival
2005
bronze
edition 3 of 3
230 x 150 x 70 cm



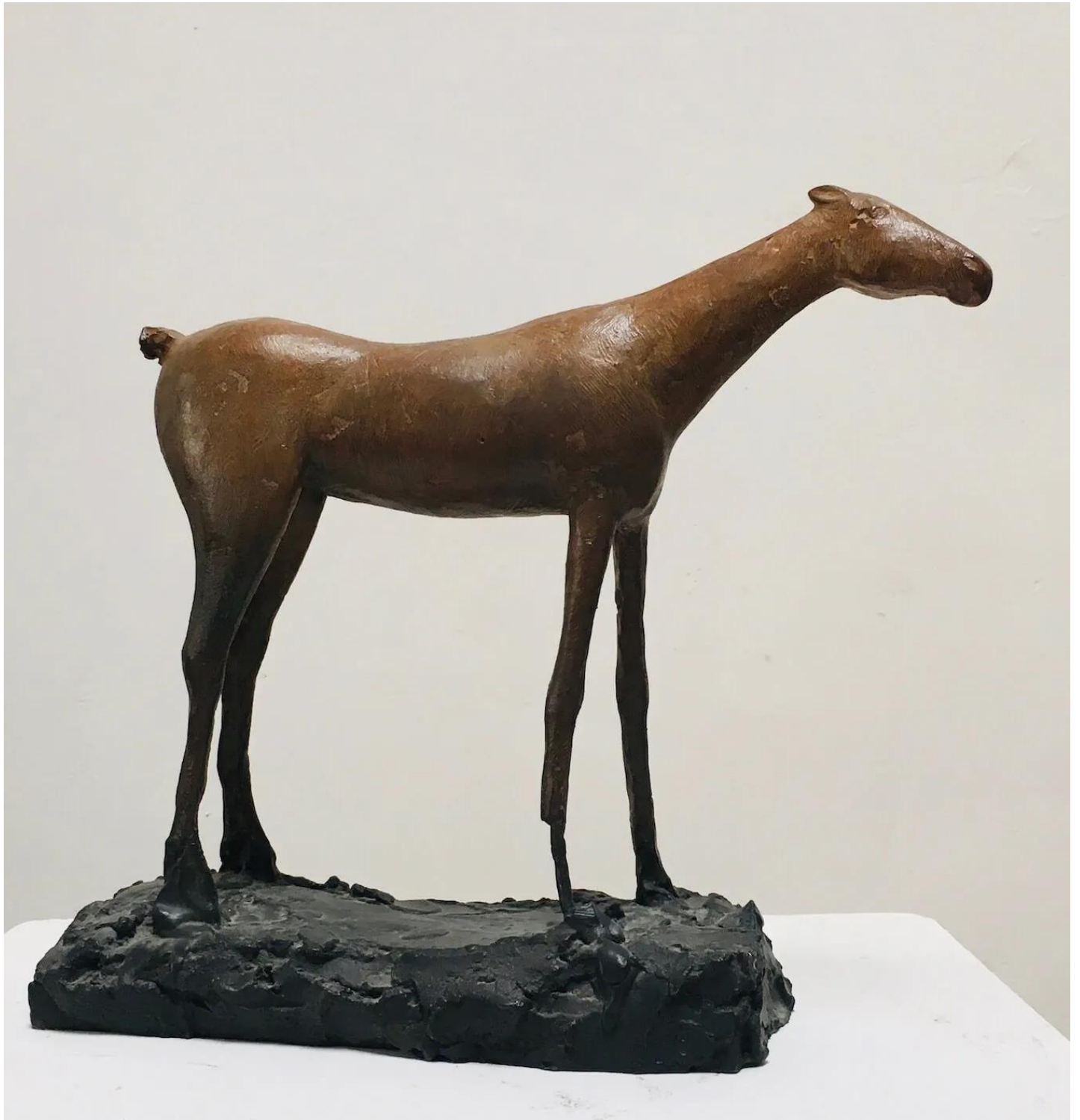
The Wait
1995
Bronze, edition 6 of 8
31 x 16 x 43 cm



Journey
2016
bronze edition 2 of 8
23 x 42 x 6 cm



Horse
1994
Bronze, Edition 2 of 8
28.5 x 31.5 x 11.5 cm





Horse
1988
bronze edition 4 of 6
103 x 54 x 32 cm



Horse
2022
Statuario marble
29 x 33 x 15 cm



Shona Nunan Studios
Correns, Provence - France
www.nunan-cartwright.com
studios@nunan-cartwright.com